



Visit the National Space Centre to support our learning on Earth and Space in science.



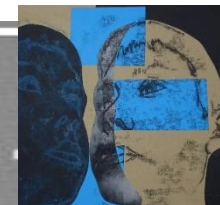
Attend the Christingle Service at St Joseph's Primary School to develop links with local schools



At the end of our design and technology unit, 'cooking and nutrition', we will eat the meal that we have cooked at Brookfield Café.



Access the local secondary school to participate in a trampolining lesson to further develop links and give the opportunity to begin to prepare for their future transition.



Display portraits created in art at Brookfield Gallery.



Our Cultural Capital Journey in Year 5



School swimming lessons weekly, to give children the skills to be safe in water.



Visit Shirebrook Leisure Centre to take part in a circuit training session that will support our PSHE unit, 'Being Healthy'.



Participate in Young Voices Choir at Sheffield Arena to be part of an amazing experience that will develop confidence and inspire teamwork along with a love of music.



Participate in the residential to Walesby Activity Centre to encourage independence and develop teamwork skills.



Meet with a PCSO from the local community to discuss antisocial behaviour and knife crime and how we can prevent it.

